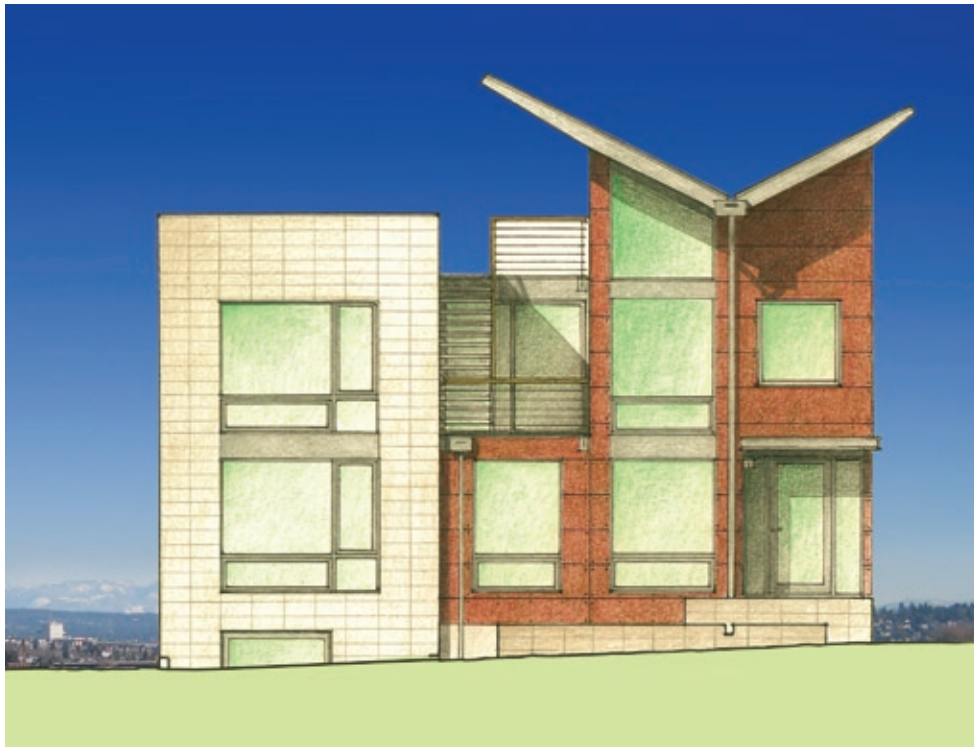


3429 10th Avenue West



A Modern Queen Anne View Home

Remarkable scenery deserves equally stunning architecture, which is what you'll find when you come home to 3429 10th Avenue West.

With a nudge and wink toward classic mid-century design principles, this Modern Queen Anne view home boldly forges its own place in the current architectural vernacular.

Cutting edge and timeless all at once, this impressive residence strikes a dramatic pose while seamlessly integrating indoor and outdoor spaces with entire walls of doors opening to the outside, and massive windows at every turn beautifully framing the expansive views.

House Features:

Henrybuilt cabinetry throughout
Subzero and Wolf appliance package
700 sqft Roof Top Deck
Ebony stained oak hardwoods
Durat counter tops
Hansgrohe & Duravit plumbing fixtures
Blanco stainless steel kitchen sinks
Prodema Siding
Radiant Heat
Hi Velocity Air Purifier with
Ultraviolet light (hospital air quality)

Media/Audio system throughout
Security/Fire System with monitoring
Large windows
Fleetwood Sliding Glass Doors
Eclipse Folding Window Walls
Mercer Aluminum Windows
Aluminex Glass Front Door
Ground Face Masonry Block Siding
Solar-ready
Wine Room

House Specifications:

House area: 4322 sqft
Lot area: 7200 sqft
4 bedrooms
2 full baths
One 3/4 bath and one 1/2 bath

For more information, contact:

Heidi Ward

360 Modern Authorized Agent

206.419.4285

heideward@360modern.com
www.queenannemodern.com